



US 20150154907A1

(19) **United States**(12) **Patent Application Publication****Nathan et al.**(10) **Pub. No.: US 2015/0154907 A1**(43) **Pub. Date: Jun. 4, 2015**(54) **PIXEL DRIVER CIRCUIT AND PIXEL CIRCUIT HAVING CONTROL CIRCUIT COUPLED TO SUPPLY VOLTAGE**

2004, now abandoned, filed as application No. PCT/CA02/00173 on Feb. 18, 2002.

(60) Provisional application No. 60/268,900, filed on Feb. 16, 2001.

(71) Applicant: **Ignis Innovation Inc.**, Waterloo (CA)(72) Inventors: **Arokia Nathan**, Cambridge (GB); **Peyman Servati**, Waterloo (CA); **Kapil Sakariya**, Santa Clara (CA); **Anil Kumar**, Kitchener (CA)(21) Appl. No.: **14/516,076**(22) Filed: **Oct. 16, 2014****Related U.S. Application Data**

(63) Continuation of application No. 14/038,651, filed on Sep. 26, 2013, now Pat. No. 8,890,220, which is a continuation of application No. 13/089,622, filed on Apr. 19, 2011, now Pat. No. 8,664,644, which is a continuation of application No. 12/504,510, filed on Jul. 16, 2009, now abandoned, which is a continuation of application No. 11/220,094, filed on Sep. 6, 2005, now Pat. No. 7,569,849, which is a continuation-in-part of application No. 10/468,319, filed on Jan. 23,

Publication Classification(51) **Int. Cl.**
G09G 3/32 (2006.01)**H03K 17/16** (2006.01)**H03K 17/687** (2006.01)(52) **U.S. Cl.**CPC **G09G 3/3233** (2013.01); **H03K 17/6871** (2013.01); **H03K 17/162** (2013.01); **G09G 2300/0819** (2013.01); **G09G 2320/0204** (2013.01); **G09G 2320/045** (2013.01)(57) **ABSTRACT**

A pixel driver circuit for driving a light-emitting element and a pixel circuit having the pixel driver circuit are provided. The pixel driver circuit includes a data line, address lines, switch thin film transistors, feedback thin film transistors and drive thin film transistors. The pixel circuit may include an organic light emitting diode, which is driven by the pixel driver circuit.

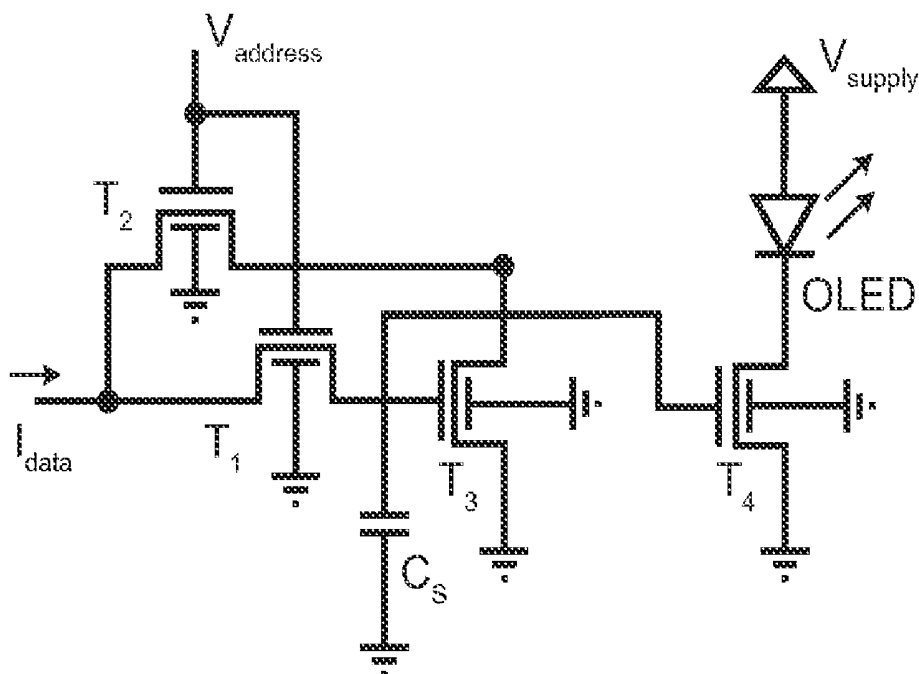


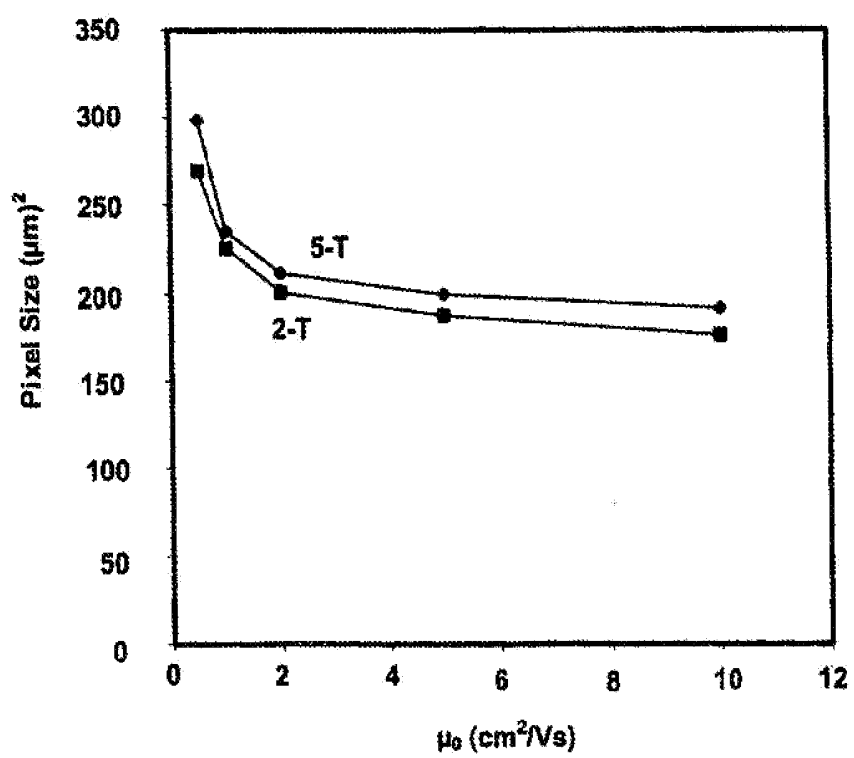
Fig. 1

Fig. 2 (Prior Art)

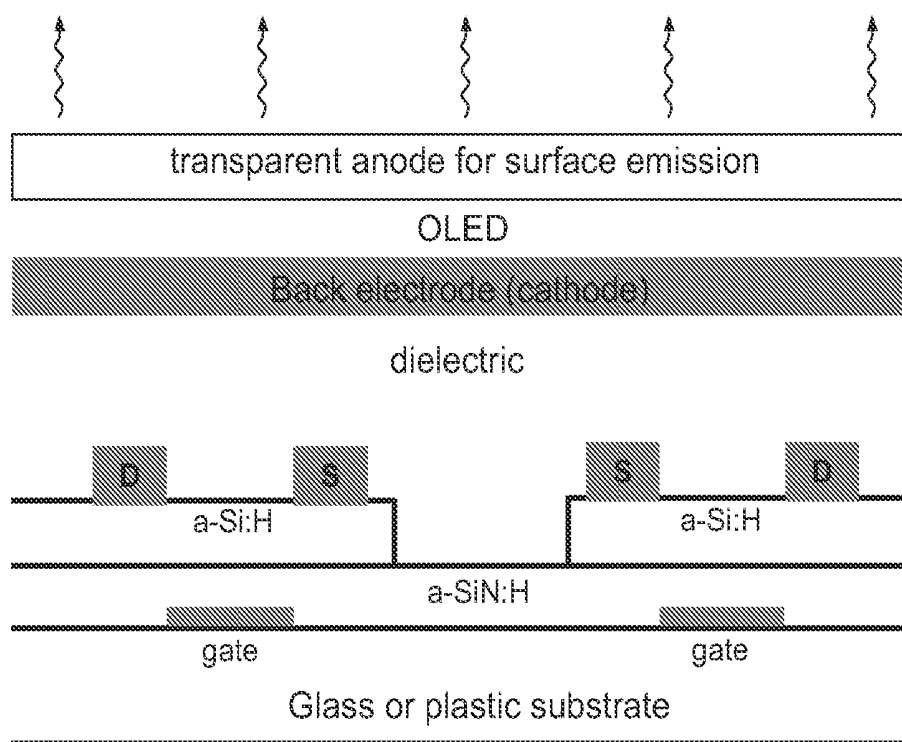


Fig. 3

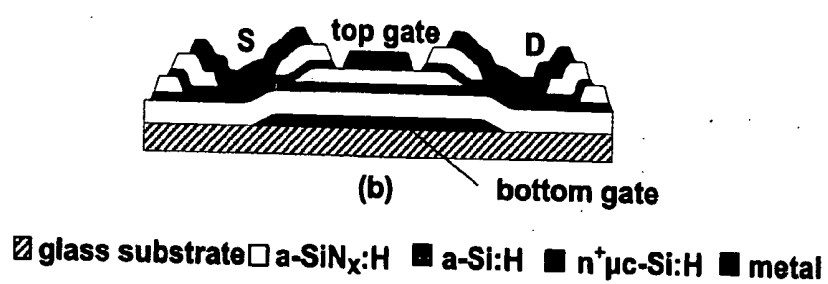


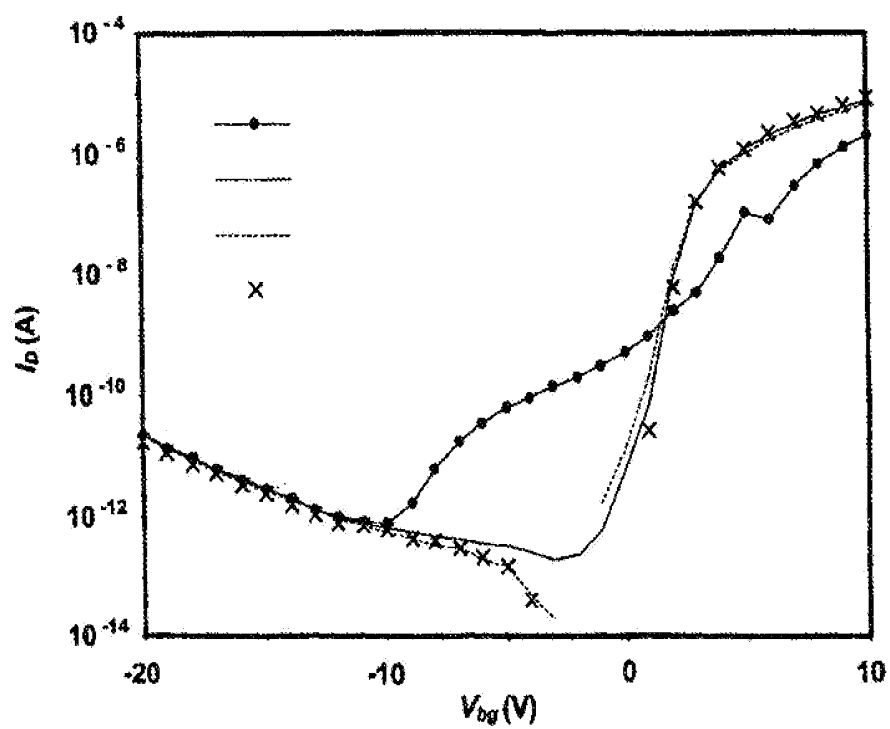
Fig. 4

Fig. 5

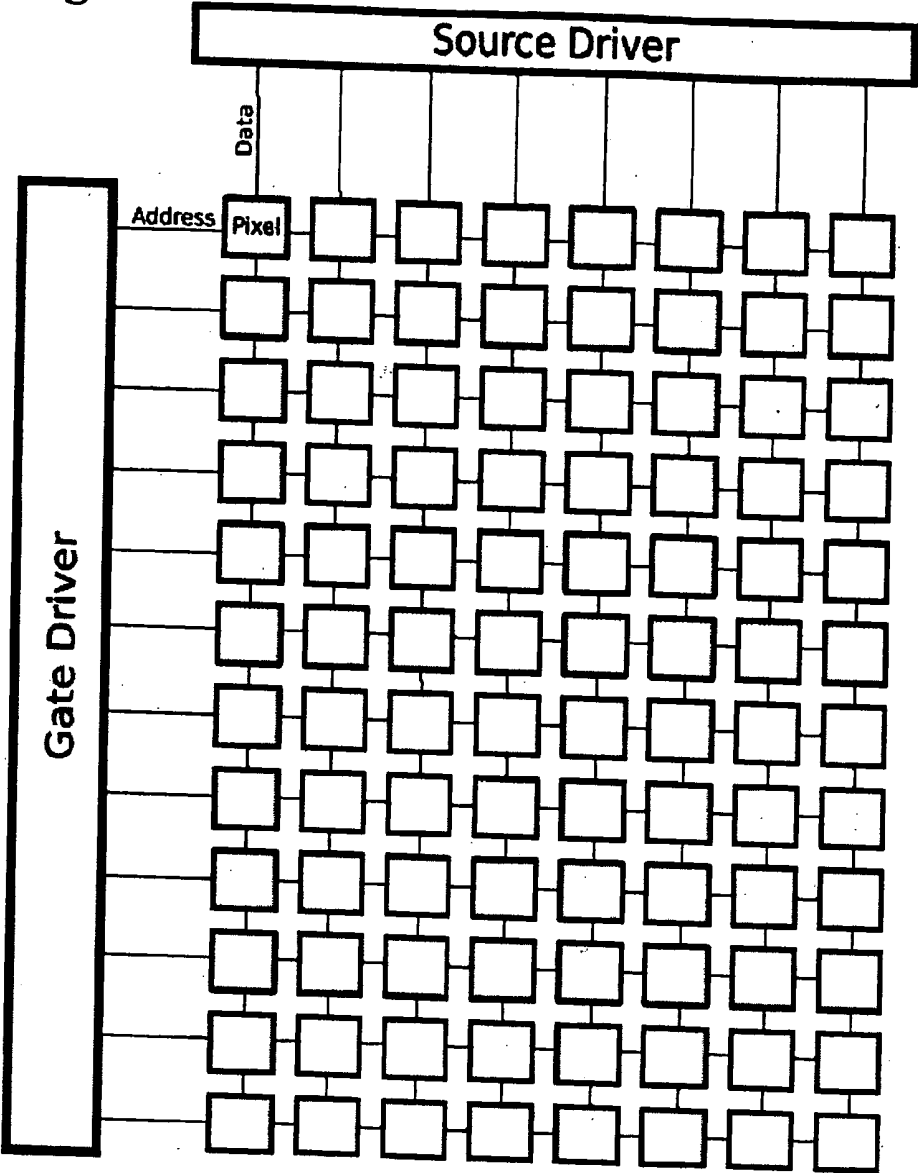


Fig. 6A (Prior Art)

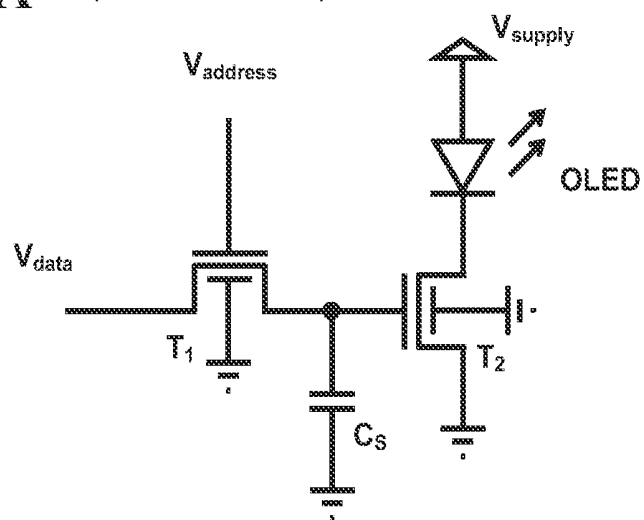


Fig. 6B (Prior Art)

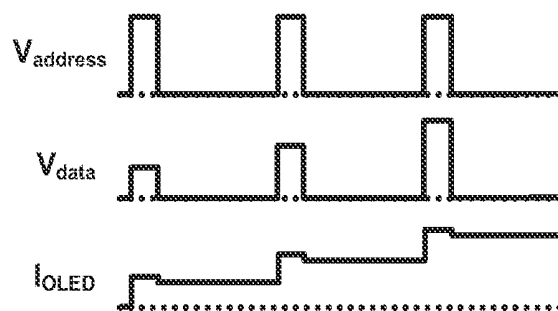


Fig. 7A

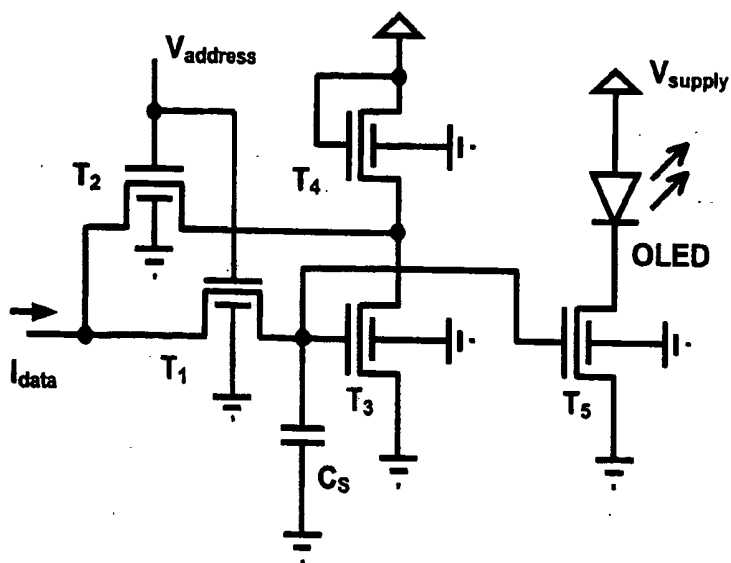


Fig. 7B

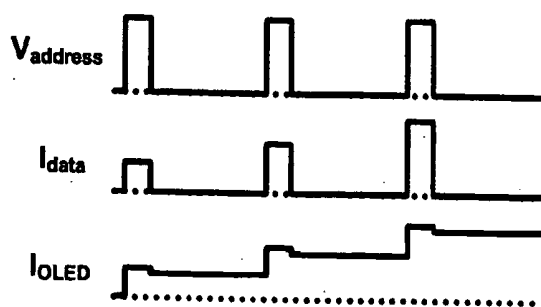


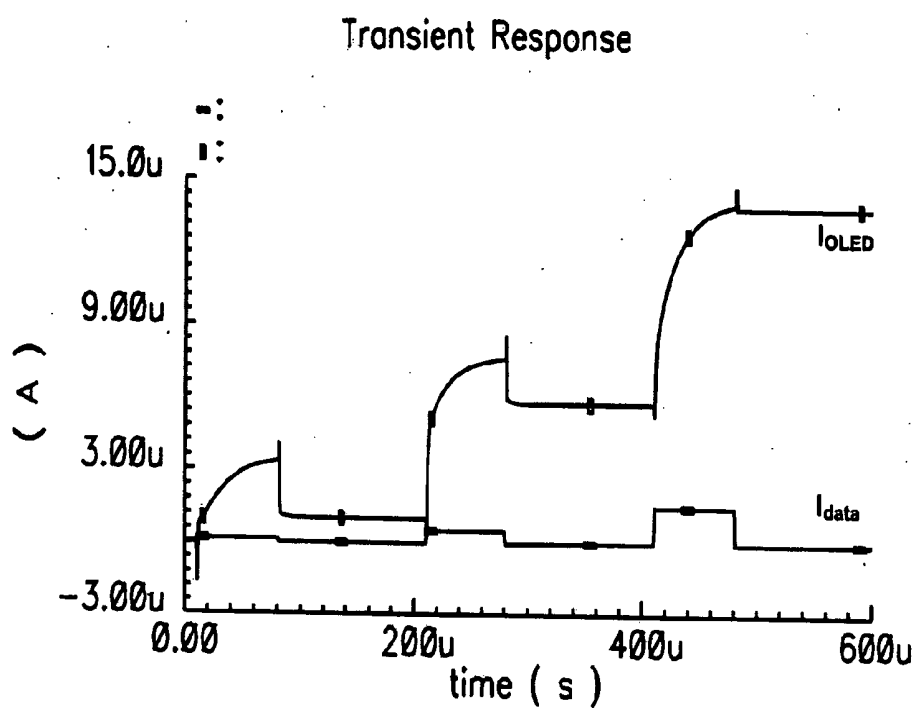
Fig. 8

Fig. 9

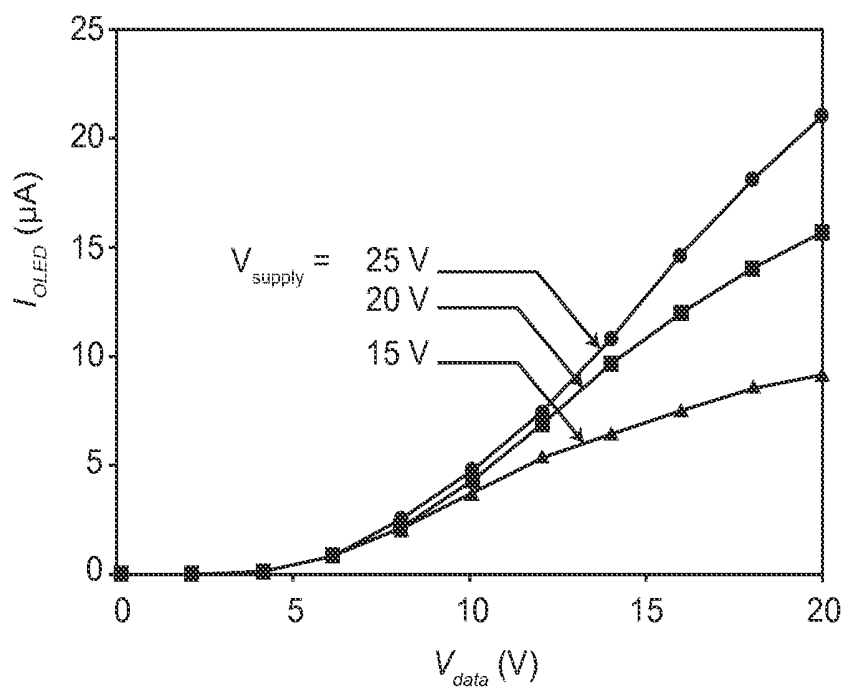


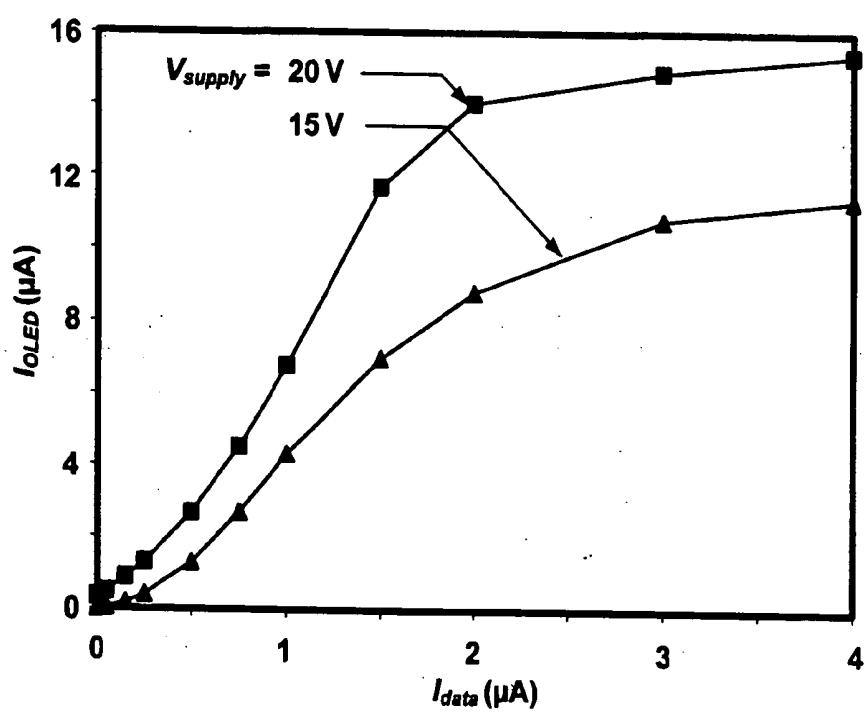
Fig. 10

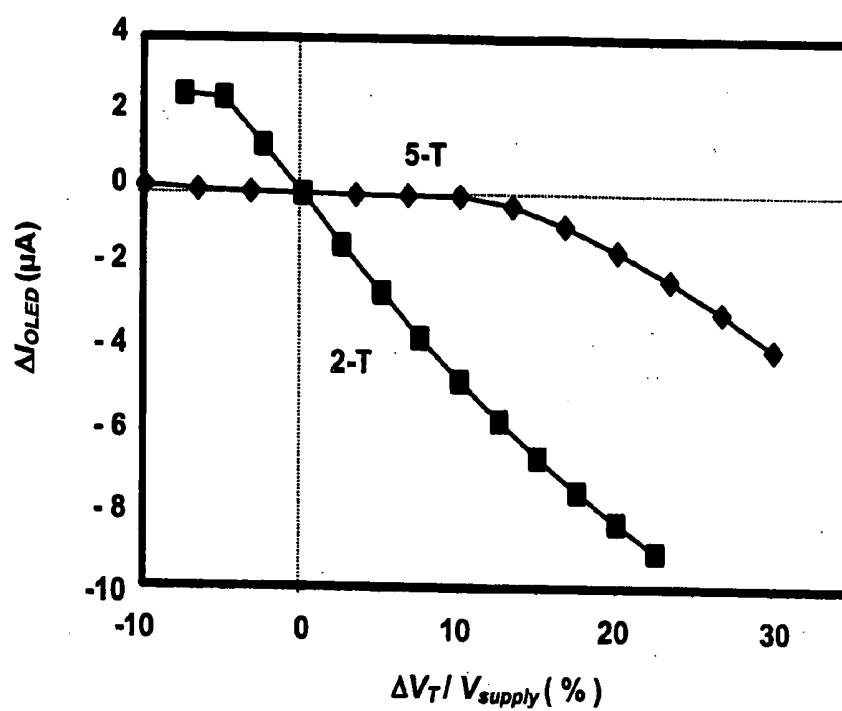
Fig. 11

Fig. 12

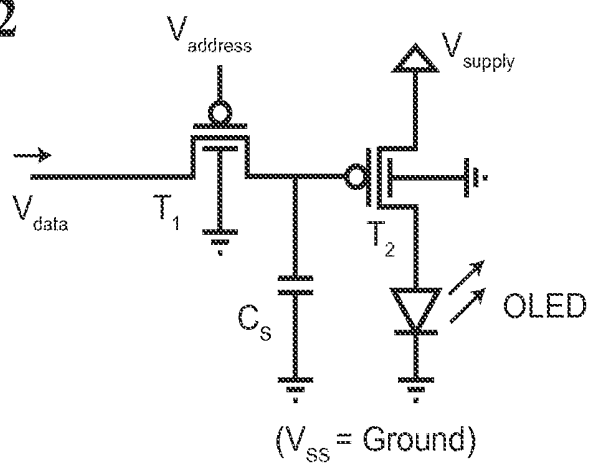
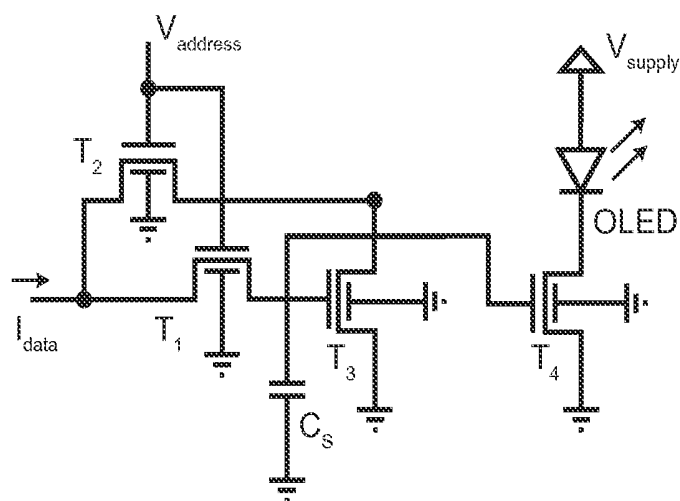


Fig. 13



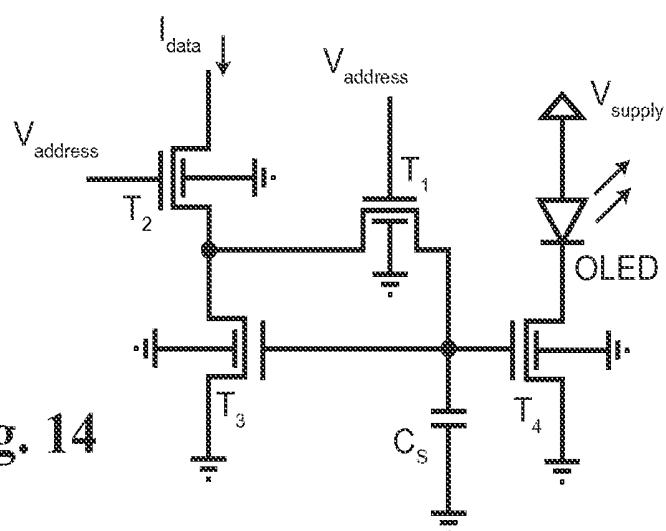


Fig. 14

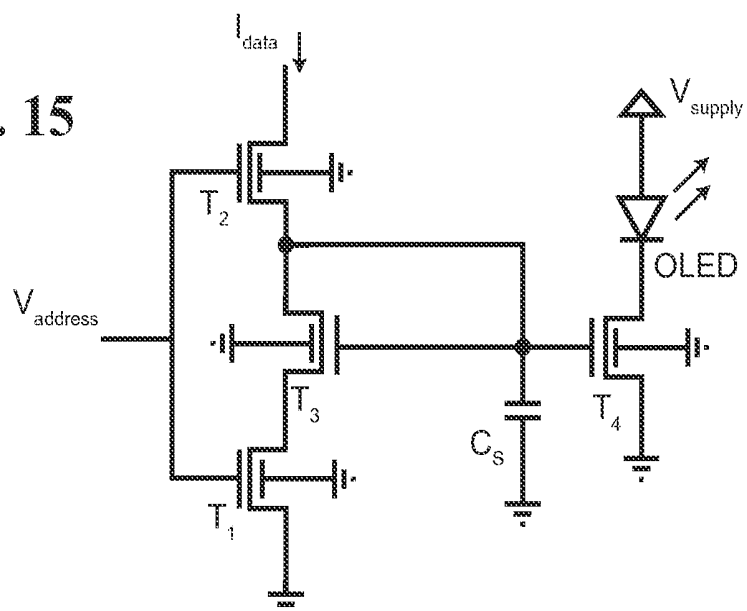


Fig. 15

Fig. 16

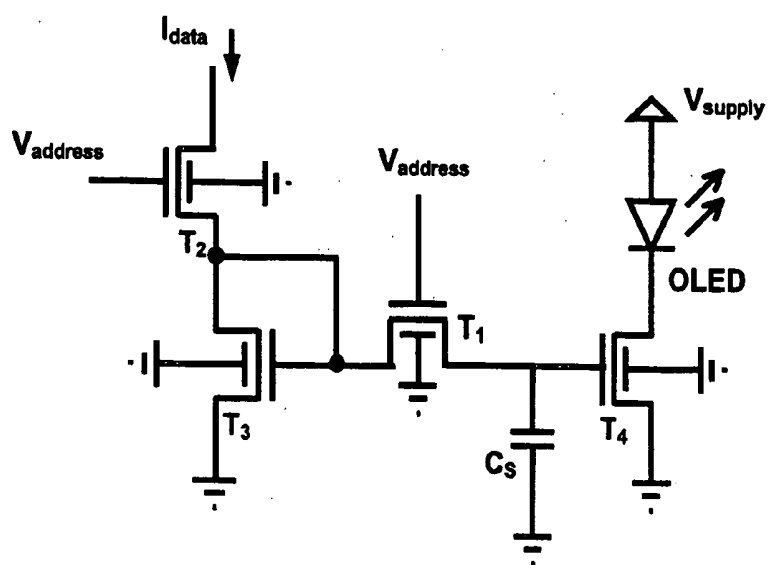
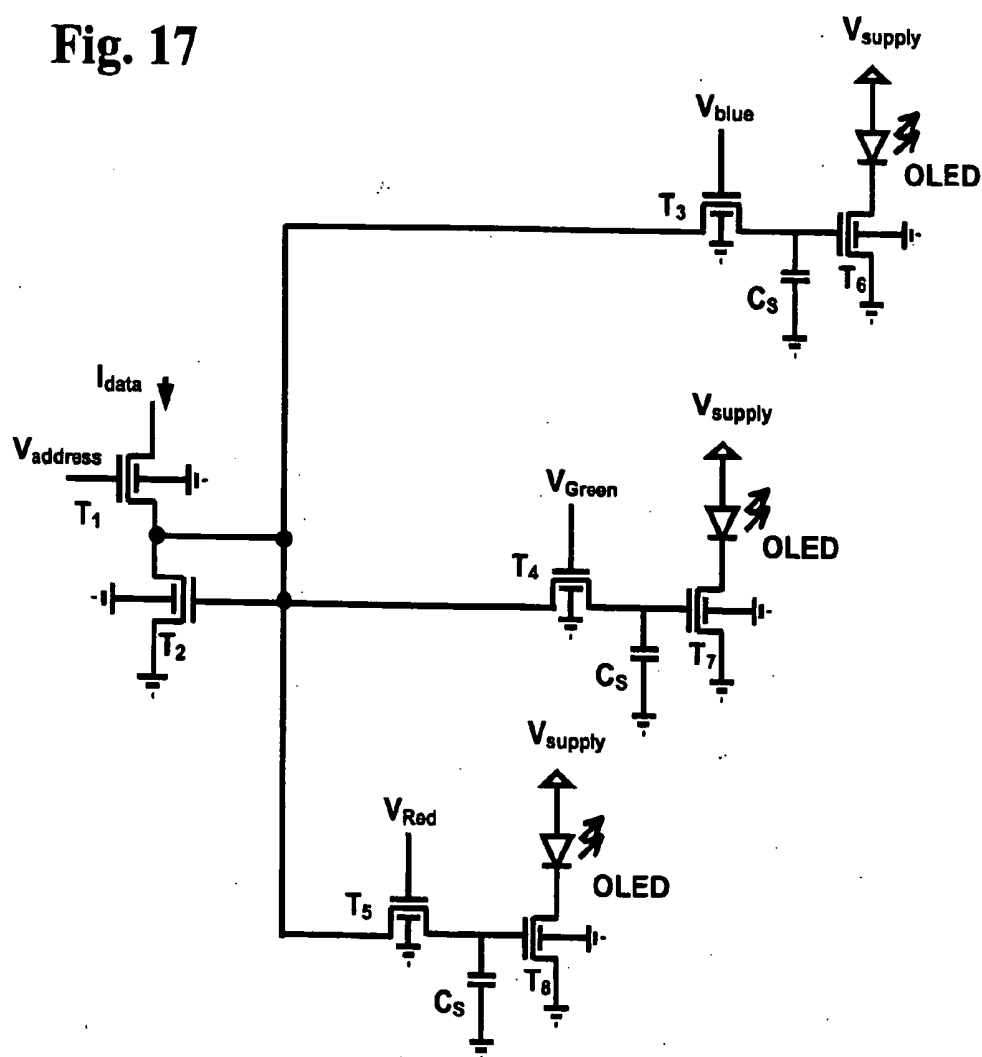


Fig. 17



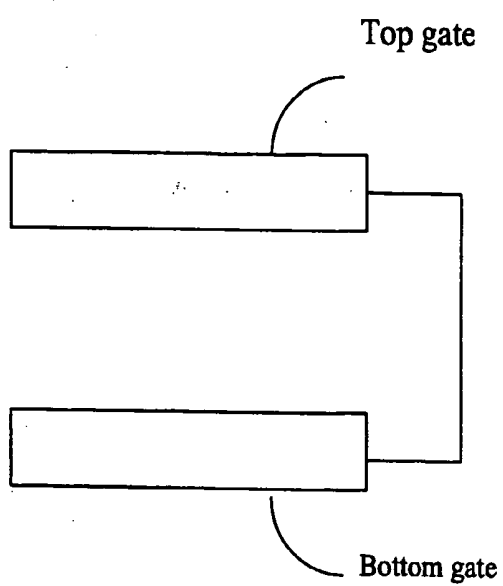


Fig. 18

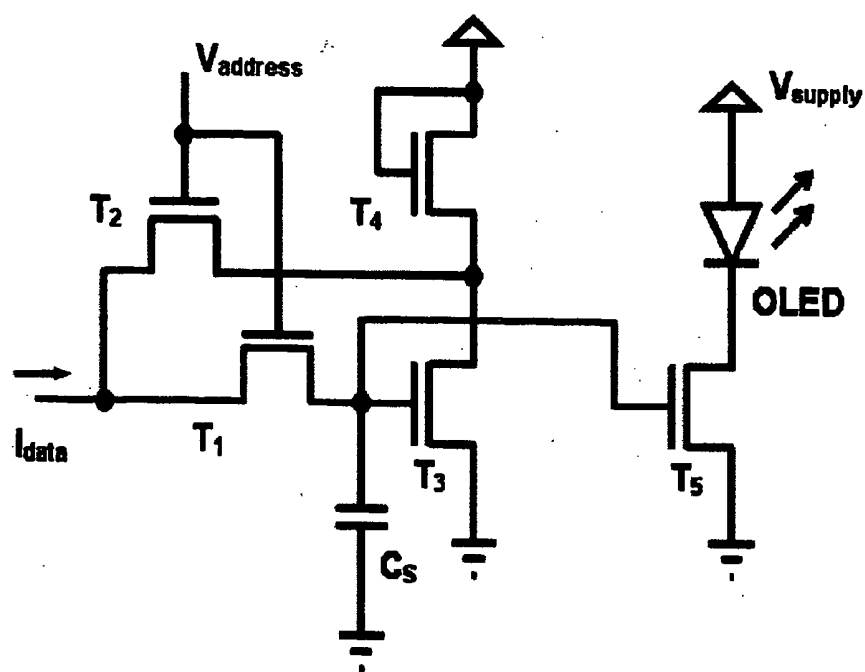
Fig. 19

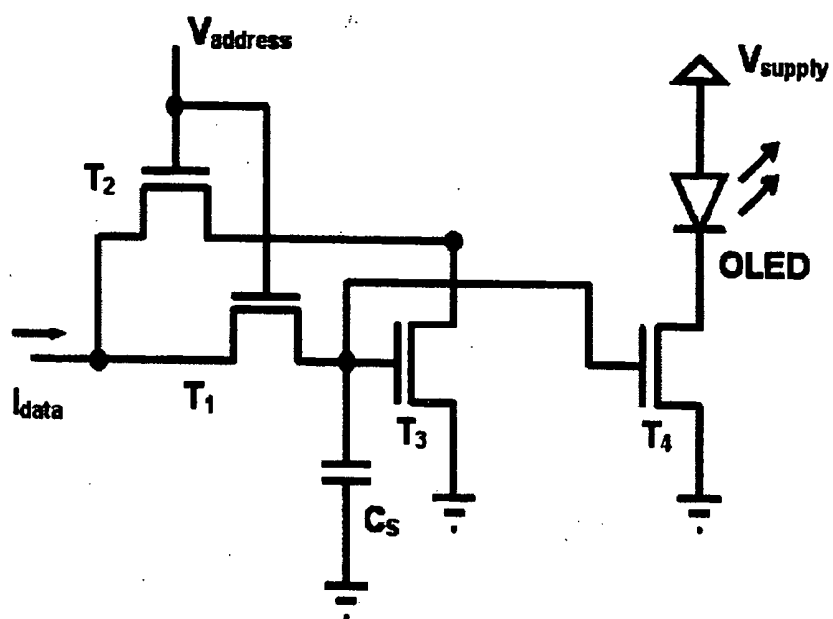
Fig. 20

Fig. 21

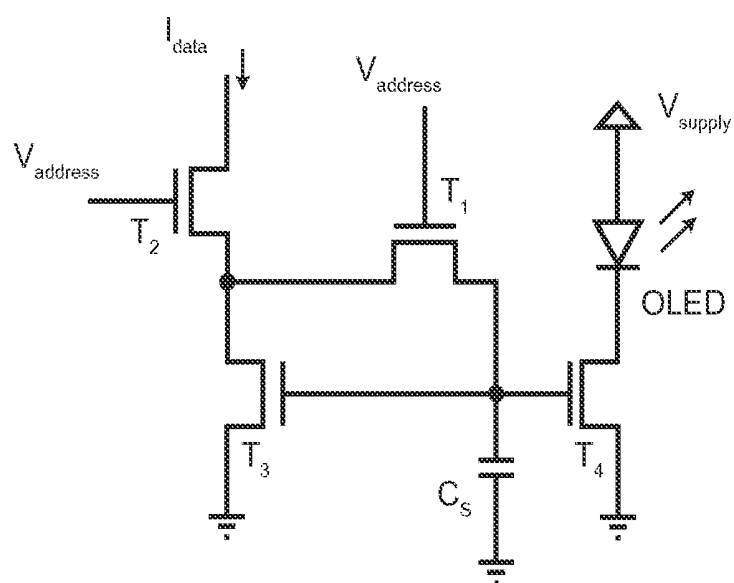


Fig. 22

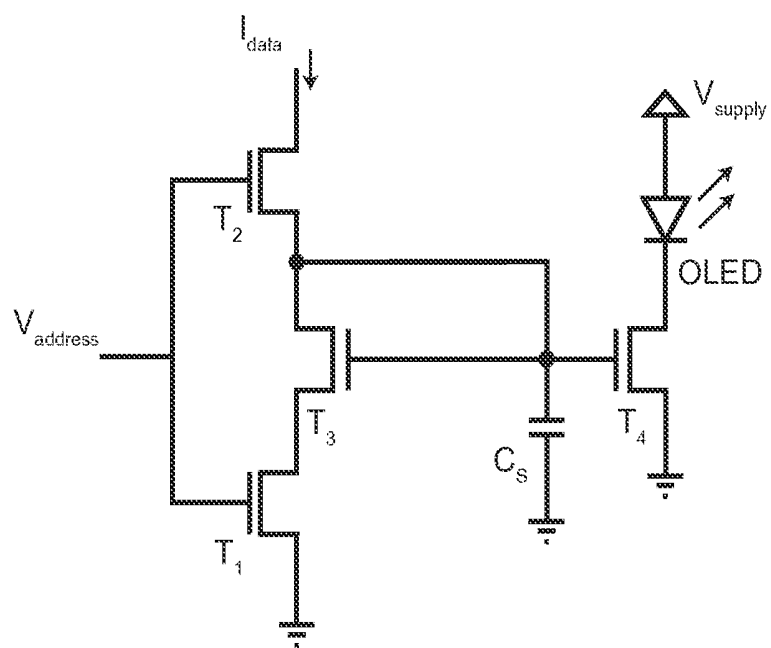
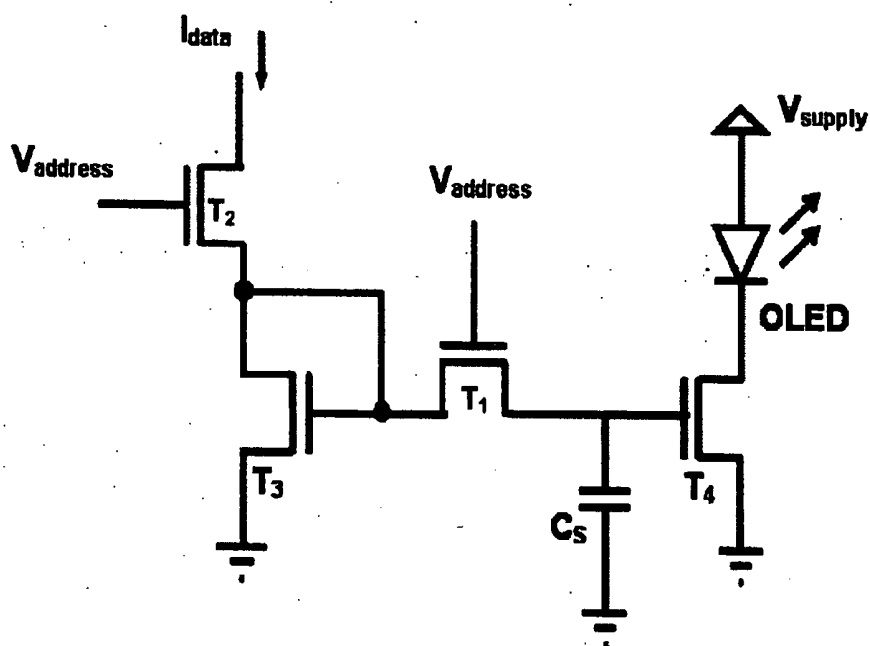


Fig. 23

The diagram illustrates a 1T1C 1P1E pixel circuit. It features a data line (I_{data}) and an address line ($V_{address}$). Transistors T_1 and T_2 are connected to the address line. Transistors T_3 , T_4 , and T_5 are connected to the data line. Capacitors C_s are connected to the gates of T_3 , T_4 , and T_5 . The OLEDs are connected to V_{supply} and ground. The circuit is designed to drive three OLEDs (Red, Green, and Blue) using a single data line and a single address line.

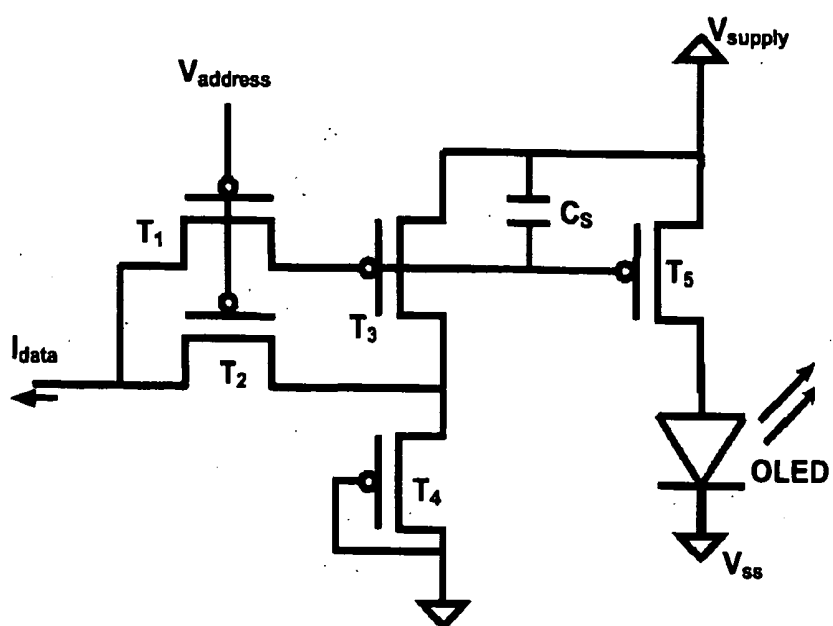
Fig. 25

Fig. 26

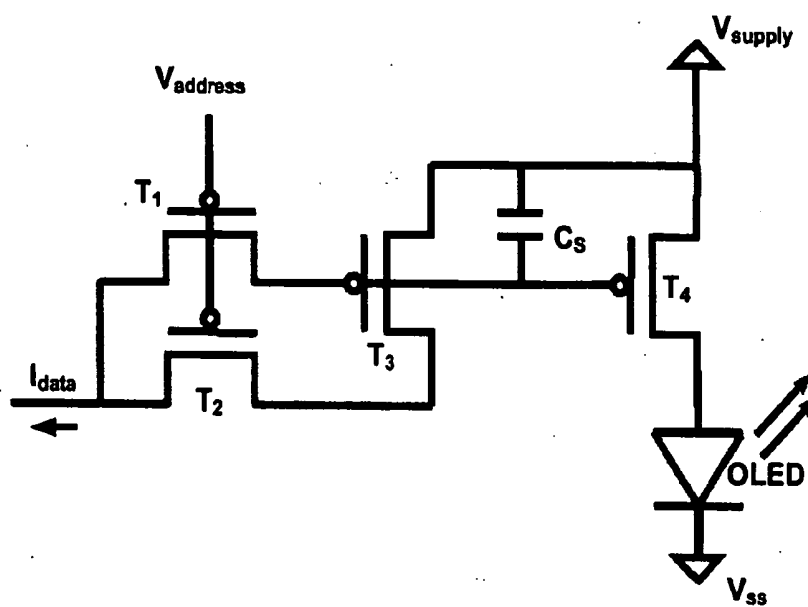


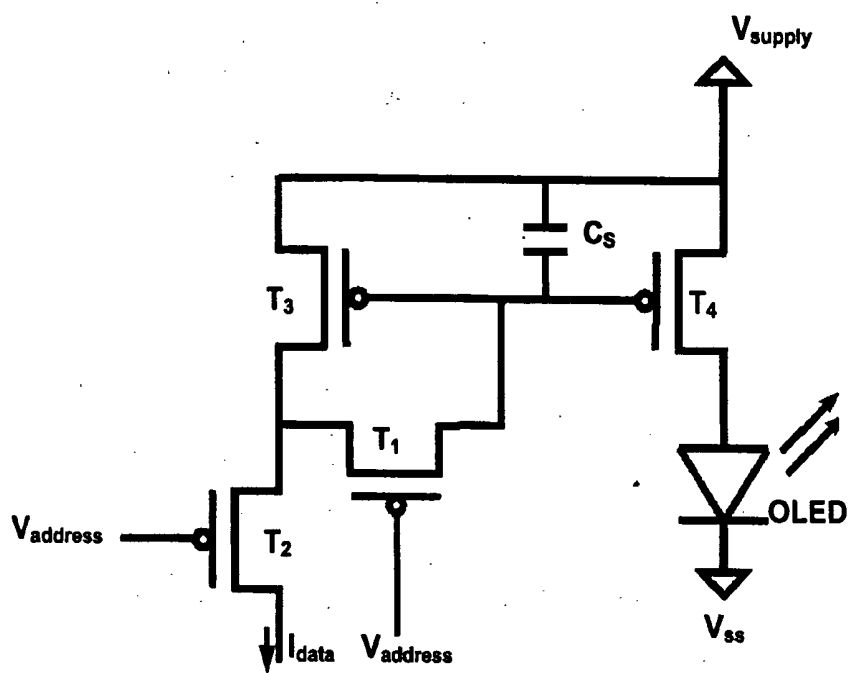
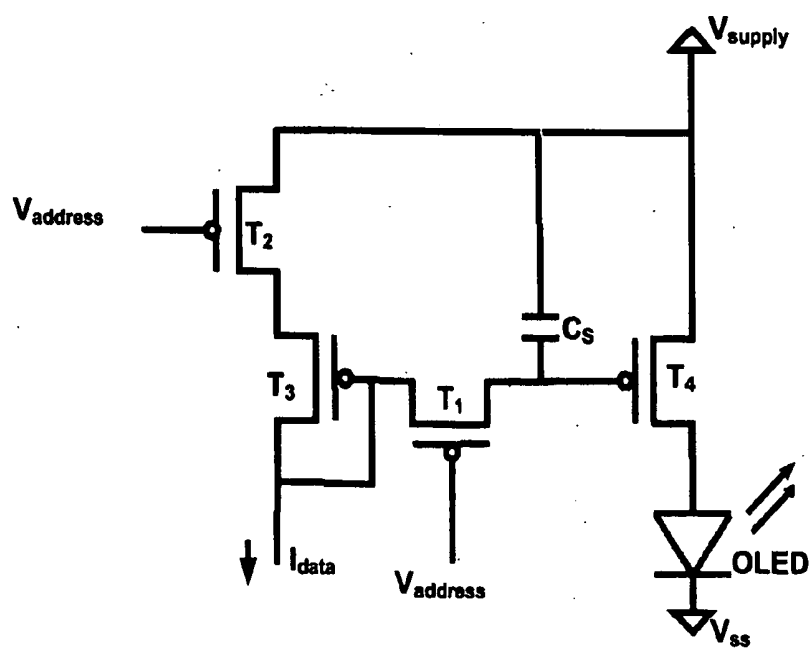
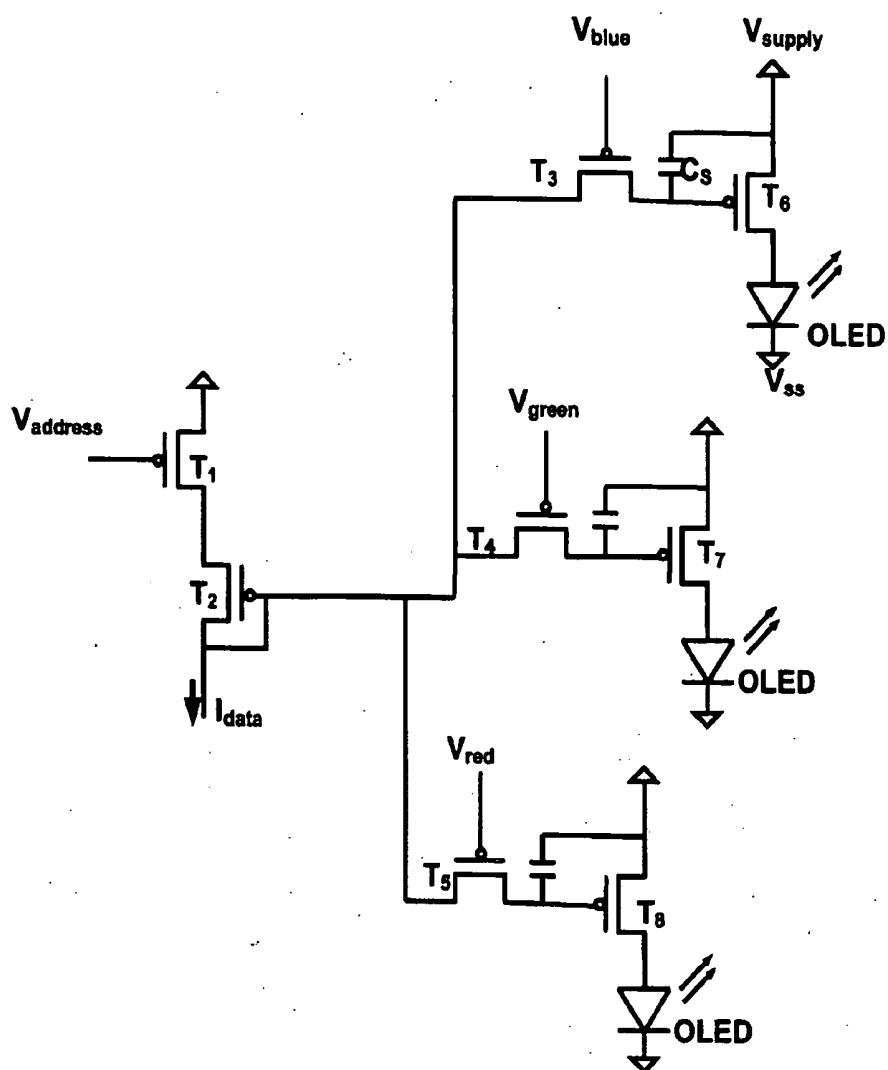
Fig. 27

Fig. 29





**PIXEL DRIVER CIRCUIT AND PIXEL
CIRCUIT HAVING CONTROL CIRCUIT
COUPLED TO SUPPLY VOLTAGE**

**CROSS-REFERENCE TO RELATED
APPLICATION**

[0001] This is a continuation-in-part application of U.S. patent application Ser. No. 10/468,319 filed on Jan. 23, 2004, which is the U.S. National Phase of PCT/CA02/00173 having an International Filing Date of Feb. 18, 2002, which claims the benefit of U.S. provisional patent application Ser. No. 60/268,900 filed on Feb. 16, 2001, the contents of all of the foregoing applications are incorporated herein by reference in their entirety.

FIELD OF INVENTION

[0002] The present invention relates to a display technology, and more particularly to a pixel driver circuit for driving a light-emitting element and a pixel circuit having the pixel driver circuit.

BACKGROUND OF THE INVENTION

[0003] Organic light emitting diode (OLED) displays have gained significant interest recently in display applications in view of their faster response times, larger viewing angles, higher contrast, lighter weight, lower power, amenability to flexible substrates, as compared to liquid crystal displays (LCDs). Despite the OLED's demonstrated superiority over the LCD, there still remain several challenging issues related to encapsulation and lifetime, yield, color efficiency, and drive electronics, all of which are receiving considerable attention.

[0004] Although passive matrix addressed OLED displays are already in the marketplace, they do not support the resolution needed in the next generation displays, since high information content (HIC) formats are only possible with the active matrix addressing scheme.

[0005] Active matrix addressing involves a layer of backplane electronics, based on thin film transistors (TFTs) fabricated using amorphous silicon (a-Si:H), polycrystalline silicon (poly-Si), or polymer technologies, to provide the bias voltage and drive current needed in each OLED based pixel. Here, the voltage on each pixel is lower and the current throughout the entire frame period is a low constant value, thus avoiding the excessive peak driving and leakage currents associated with passive matrix addressing. This in turn increases the lifetime of the OLED.

[0006] In active matrix OLED (AMOLED) displays, it is important to ensure that the aperture ratio or fill factor (defined as the ratio of light emitting display area to the total pixel area) should be high enough to ensure display quality.

[0007] Conventional AMOLED displays are based on light emission through an aperture on the glass substrate where the backplane electronics is integrated. Increasing the on-pixel density of TFT integration for stable drive current reduces the size of the aperture. The same happens when pixel sizes are scaled down. One solution to having an aperture ratio that is invariant on scaling or on-pixel integration density is to vertically stack the OLED layer on the backplane electronics, along with a transparent top electrode as shown in FIG. 2. In FIG. 2, reference numerals S and D denote a source and a drain, respectively. This implies a continuous back electrode over the OLED pixel.

[0008] However, this continuous back electrode can give rise to parasitic capacitance, whose effects become significant when the electrode runs over the switching and other TFTs. The presence of the back electrode can induce a parasitic channel in TFTs giving rise to high leakage current. The leakage current is the current that flows between source and drain of the TFT when the gate of the TFT is in its OFF state.

SUMMARY OF THE INVENTION

[0009] It is an object of the invention to provide a system that obviates or mitigates at least one of the disadvantages of existing systems.

[0010] The present invention relates to a pixel driver circuit for driving a light-emitting element (e.g. OLED), and a pixel circuit having the pixel driver circuit.

[0011] In accordance with an aspect of the present invention, there is provided a pixel driver circuit, which includes: an address line; a data line; a switch thin film transistor, a first node of the switch transistor being connected to the data line and a gate of the switch transistor being connected to the address line; a feedback thin film transistor, a first node of the feedback transistor being connected to the data line and a gate of the feedback transistor being connected to the address line; a reference thin film transistor, a drain of the reference transistor being connected to a second node of the feedback transistor, a gate of the reference transistor being connected to a second node of the switch transistor and a source of the reference transistor being connected to a ground potential; and a drive thin film transistor, a gate of the drive transistor being connected to the gate of the reference transistor.

[0012] In accordance with a further aspect of the present invention, there is provided a pixel circuit, which includes: the pixel driver circuit described above; and an organic light emitting diode, the source of the drive transistor being connected to the ground potential and the drain being connected to the organic light emitting diode.

[0013] In accordance with a further aspect of the present invention, there is provided a pixel driver circuit, which includes: an address line; a data line; a switch thin film transistor, a first node of the switch transistor being connected to the data line and a gate of the switch transistor being connected to the address line; a feedback thin film transistor, a gate of the feedback transistor being connected to the address line and a second node of the feedback transistor being connected to a ground potential; a reference thin film transistor, a drain of the reference transistor being connected to a second node of the switch transistor, a gate of the reference transistor being connected to the second node of the switch transistor and a source of the reference transistor being connected to a first node of the feedback transistor; and a drive thin film transistor, a gate of the drive transistor being connected to the gate of the reference transistor.

[0014] In accordance with a further aspect of the present invention, there is provided a pixel circuit, which includes: the pixel driver circuit described above; and an organic light emitting diode, the source of the drive transistor being connected to the ground potential and the drain being connected to the organic light emitting diode.

[0015] In accordance with a further aspect of the present invention, there is provided a pixel circuit, which includes: the pixel driver circuit described above; and an organic light emitting diode, the source of the drive transistor being connected to the organic light emitting diode and the drain being connected to a voltage supply.

[0016] In accordance with a further aspect of the present invention, there is provided a pixel driver circuit, which includes: an address line; a data line; a switch thin film transistor, a first node of the switch transistor being connected to the data line and a gate of the switch transistor being connected to the address line; a feedback thin film transistor, a first node of the feedback transistor being connected to the data line and a gate of the feedback transistor being connected to the address line; a reference thin film transistor, a drain of the reference transistor being connected to a second node of the feedback transistor, the gate of the reference transistor being connected to a second node of the switch transistor and a source of the reference transistor being connected to a ground potential; a diode-use thin film transistor, a drain and a gate of the diode-use transistor being connected to a potential, and a source of the diode-use transistor being connected to the second node of the feedback transistor; and a drive thin film transistor, a gate of the drive transistor being connected to the gate of the reference transistor.

[0017] In accordance with a further aspect of the present invention, there is provided a pixel circuit, which includes: the pixel driver circuit described above; and an organic light emitting diode, the source of the drive transistor being connected to the ground potential and the drain being connected to the organic light emitting diode.

[0018] In accordance with a further aspect of the present invention, there is provided a pixel circuit, which includes: the pixel driver circuit described above; and an organic light emitting diode, the source of the drive transistor being connected to the organic light emitting diode, and the drain being connected to a voltage supply.

[0019] In accordance with a further aspect of the present invention, there is provided a pixel driver circuit for driving a colour pixel of a colour display, which includes: a first address line; a data line; a first switch thin film transistor, a first node of the first switch transistor being connected to the data line and a gate of the switch transistor being connected to the first address line; a feedback thin film transistor, a first node and a gate of the feedback transistor being connected to a second node of the first switch transistor and a second node of the feedback transistor being connected to a ground potential; a second switch thin film transistor, a source of the second switch transistor being connected to a second node of the first switch transistor, a gate of the second switch transistor being connected to a second address line; a first drive thin film transistor, a gate of the first drive transistor being connected to a drain of the second switch transistor; a third switch thin film transistor, a source of the third switch transistor being connected to the second node of the first switch transistor, a gate of the third switch transistor being connected to a third address line; a second drive thin film transistor, a gate, of the second drive transistor being connected to the drain of the third switch transistor; a fourth switch thin film transistor, a source of the fourth switch transistor being connected to the second node of the first switch transistor, a gate of the fourth switch transistor being connected to a fourth address line; and a third drive thin film transistor, a gate of the third drive transistor being connected to the drain of the fourth switch transistor.

[0020] In accordance with a further aspect of the present invention, there is provided a pixel circuit, which includes: the pixel driver circuit described above; a first organic light emitting diode, a source of the first drive transistor being connected to the ground potential and a drain of the first drive

transistor being connected to the first organic light emitting diode; a second organic light emitting diode, a source of the second drive transistor being connected to the ground potential and a drain of the second drive transistor being connected to the second organic light emitting diode; and a third organic light emitting diode, a source of the third drive transistor being connected to the ground potential and a drain of the third drive transistor being connected to the third organic light emitting diode.

[0021] In accordance with a further aspect of the present invention, there is provided a pixel circuit which includes: a pixel driver circuit described above, a first organic light emitting diode associated with the first drive transistor; a second organic light emitting diode associated with the second drive transistor; and a third organic light emitting diode associated with the third drive transistor, the source of the first drive transistor being connected to the first organic light emitting diode, and a drain of the first drive transistor being connected to a voltage supply.

[0022] This summary of the invention does not necessarily describe all features of the invention.

BRIEF DESCRIPTION OF THE DRAWINGS

[0023] These and other features of the invention will become more apparent from the following description in which reference is made to the appended drawings wherein:

[0024] FIG. 1 shows variation of required pixel areas with mobility for 2-T and 5-T pixel drivers;

[0025] FIG. 2 shows a conventional pixel architecture for surface emissive a-Si:H AMOLED displays;

[0026] FIG. 3 shows a cross section view of a dual-gate TFT structure;

[0027] FIG. 4 shows forward and reverse transfer characteristics of dual-gate TFT for various top gate biases;

[0028] FIG. 5 shows a panel architecture of a AMOLED display;

[0029] FIG. 6A shows a pixel circuit including a conventional 2-T pixel driver circuit;

[0030] FIG. 6B shows input-output timing diagrams for the 2-T pixel circuit of FIG. 6A;

[0031] FIG. 7A shows a pixel circuit including a 5-T pixel current driver circuit for an OLED display in accordance with an embodiment of the present invention;

[0032] FIG. 7B shows input-output timing diagrams of the 5-T pixel circuit of FIG. 7A;

[0033] FIG. 8 shows transient performance of the 5-T pixel current driver circuit of FIG. 7A for three consecutive write cycles;

[0034] FIG. 9 shows input-output transfer characteristics for the 2-T pixel driver circuit of FIG. 6A for different supply voltages;

[0035] FIG. 10 shows input-output transfer characteristics for the 5-T pixel current driver circuit of FIG. 7A for different supply voltages;

[0036] FIG. 11 shows variation in OLED current as a function of the normalized shift in threshold voltage;

[0037] FIG. 12 shows a pixel circuit including a conventional 2-T polysilicon based pixel driver circuit having p-channel drive TFTs;

[0038] FIG. 13 shows a pixel circuit including a 4-T pixel current driver circuit for an OLED display in accordance with a further embodiment of the present invention;

[0039] FIG. 14 shows a pixel circuit including a 4-T pixel current driver circuit for an OLED display in accordance with a further embodiment of the present invention;

[0040] FIG. 15 shows a pixel circuit including a 4-T pixel current driver circuit for an OLED display in accordance with a further embodiment of the present invention;

[0041] FIG. 16 shows a pixel circuit including a 4-T pixel current driver circuit for an OLED display in accordance with a further embodiment of the present invention;

[0042] FIG. 17 shows a pixel circuit including a pixel current driver circuit for a full color, OLED display in accordance with a further embodiment of the present invention;

[0043] FIG. 18 shows a schematic diagram of the top gate and the bottom gate of a dual gate transistor where the top gate is electrically connected to the bottom gate;

[0044] FIG. 19 shows a pixel circuit including a 5-T pixel current driver circuit in accordance with a further embodiment of the present invention;

[0045] FIG. 20 shows a pixel circuit including a 4-T pixel current driver circuit in accordance with a further embodiment of the present invention;

[0046] FIG. 21 shows a pixel circuit including a 4-T pixel current driver circuit in accordance with a further embodiment of the present invention;

[0047] FIG. 22 shows a pixel circuit including a 4-T pixel current driver circuit in accordance with a further embodiment of the present invention;

[0048] FIG. 23 shows a pixel circuit including a 4-T pixel current driver circuit in accordance with a further embodiment of the present invention;

[0049] FIG. 24 shows a pixel circuit including a pixel current driver circuit for a full color display in accordance with a further embodiment of the present invention;

[0050] FIG. 25 shows a pixel circuit including a 5-T pixel current driver circuit in accordance with a further embodiment of the present invention;

[0051] FIG. 26 shows a pixel circuit including a 4-T pixel current driver circuit in accordance with a further embodiment of the present invention;

[0052] FIG. 27 shows a pixel circuit including a 4-T pixel current driver circuit in accordance with a further embodiment of the present invention;

[0053] FIG. 28 shows a pixel circuit including a 4-T pixel current driver circuit in accordance with a further embodiment of the present invention;

[0054] FIG. 29 shows a pixel circuit including a 4-T pixel current driver circuit in accordance with a further embodiment of the present invention; and

[0055] FIG. 30 shows a pixel circuit including a pixel current driver circuit for a full color display in accordance with a further embodiment of the present invention.

DETAILED DESCRIPTION

[0056] The following description is of a preferred embodiment.

[0057] The embodiments of the present invention are described using an OLED display. However, the embodiments of the present invention are applicable to any other displays, such as phosphorus displays, inorganic electroluminescent (EL), and LED displays. A pixel driver circuit in accordance with the embodiments of the present invention includes a plurality of TFTs, which form a current mirror based pixel current driver for automatically compensating for

the shift of threshold V_{th} of a drive TFT. The TFTs are formed in a current-programmed ΔV_T -compensated manner.

[0058] The pixel driver circuit is suitable for an OLED display. The OLED layer may be vertically stacked on the plurality of TFTs. The pixel driver circuit may be provided for monochrome displays or for full colour displays. The OLED may be a regular (P-I-N) stack OLED or an inverted (N-I-P) stack OLED, and may be located at either the drain or source of the drive TFT(s).

[0059] The TFT may be an n-type TFT or a p-type TFT. The TFT may be, but not limited to, an amorphous silicon (a-Si:H) based TFT, a polysilicon-based TFT, a crystalline silicon based TFT, or an organic semiconductor based TFT.

[0060] Although amorphous Si does not enjoy equivalent electronic properties compared to poly-Si, it adequately meets many of the drive requirements for small area displays such as those used in pagers, cell phones, and other mobile devices. Poly-Si TFTs have one key advantage in that they are able to provide better pixel drive capability because of their higher mobility. Their higher mobility can be of the order of $\mu_{FE} \sim 100 \text{ cm}^2/\text{Vs}$. " μ_{FE} " represents field effect mobility, which is typically used to evaluate how well a semiconductor can conduct. "Vs" is a unit where V stands for volt, and s stands for second. This makes poly-Si highly desirable for large area (e.g. laptop size) Video Graphics Array (VGA) and Super VGA (SVGA) displays. The lower mobility associated with a-Si:H TFTs ($\mu_{FE} 1 \text{ cm}^2/\text{Vs}$) is not a limiting factor since the drive transistor in the pixel can be scaled up in area to provide the needed drive current. The OLED drive current density is typically $10 \text{ mA}/\text{cm}^2$ at 10V operation to provide a brightness of $100 \text{ cd}/\text{m}^2$, which is the required luminance for most displays. For example, with an a-Si:H TFT mobility of $0.5 \text{ cm}^2/\text{Vs}$ and channel length of $25 \mu\text{m}$, this drive current requirement translates into required pixel area of $300 \mu\text{m}^2$, which adequately meets the requirements of pixel resolution and speed for some 3-inch monochrome display applications.

[0061] FIG. 1 illustrates simulation results for the variation of the required pixel size with device mobility calculated for two types of drivers, which will be elaborated later, a conventional voltage-programmed 2-T pixel driver circuit (FIG. 6A) and a current-programmed, Δ_T -compensated 5-T pixel driver circuit in accordance with an embodiment of the present invention (FIG. 7A).

[0062] In FIG. 1, the graph having a mark "■" represents the pixel size required by the 2T pixel driver circuit given a reference mobility of the TFT, and the graph having a mark "◆" represents the pixel size required by the 5T pixel driver circuit given a reference mobility of the TFT. In FIG. 1, " μ_0 " denotes a reference mobility whose value is in the range 0.1 to $1 \text{ cm}^2/\text{Vs}$.

[0063] For instance, the area of the pixel for the 2-T pixel driver (FIG. 6A) has the area of the switching transistors, the area of the drive transistor, and the area occupied by interconnects, bias lines, etc. In FIG. 1, the drive current and frame rate are kept constant at $10 \mu\text{A}$ and 50 Hz, respectively, for a 230×230 array. It is clear that there is no significant savings in area between the 2-T and 5-T pixel drivers but the savings are considerable with increasing mobility. This stems mainly from the reduction in the area of the drive transistor where there is a trade-off between μ_{FE} and TFT aspect ratio, W/L (Width/Length).

[0064] In terms of threshold voltage (V_T) uniformity and stability, both poly-Si and a-Si:H share the same concerns, although in comparison, the latter provides far better spatial

uniformity but not stability (ΔV_T). Thus the inter-pixel variation in the drive current can be a concern in both cases, although clever circuit design techniques can be employed to compensate for ΔV_T hence improving drive current uniformity. In terms of long-term reliability, it is not clear with poly-Si technology. Although there are already products based on a-Si:H technology for displays and imaging, the reliability issues associated with OLEDs may yet be different.

[0065] The fabrication processes associated with technology are standard and adapted from mainstream integrated circuit (IC) technology, but with capital equipment costs that are much lower. One of the main advantages of the a-Si:H technology is that it has become a low cost and well-established technology, while poly-Si has yet to reach the stage of manufacturability. The technology also holds great promise for futuristic applications since deposition of a-Si:H, a-SiN_x:H, and TFT arrays can be achieved at low temperatures ($\leq 120^\circ \text{C}$.) thus making it amenable to plastic substrates, which is a critical requirement for mechanically flexible displays.

[0066] To minimize the conduction induced in all TFTs in the pixel by the back electrode, an alternate TFT structure based on a dual-gate structure is employed as shown in FIG. 7A. In the dual gate TFT (e.g. FIG. 3), a top gate electrode is added to the TFT structure to prevent the OLED electrodes from biasing the a-Si:H channel area (FIG. 2). The voltage on the top gate can be chosen such so as to minimize the charge induced in the (parasitic) top channel of the TFT. The objective underlying the choice of the voltage on the top gate is to minimize parasitic capacitance in the driver circuits and leakage currents in the TFTs so as to enhance circuit performance. In what follows, the operation of the dual-gate TFT is described.

[0067] FIG. 3 illustrates the structure of a dual-gate TFT fabricated for this purpose, wherein reference numerals S and D denote a source and a drain, respectively. The fabrication steps are the same as of that of a normal inverted staggered TFT structure except that it requires a sixth mask for patterning the top gate. The length of the TFT may be around 30 μm to provide enough spacing between the source and drain for the top gate. The width may be made large (e.g. 1600 μm) by interconnecting four TFTs with $W=400 \mu\text{m}$ (with four of these TFTs) in parallel to create a sizeable leakage current for measurement. A delay time is inserted in the measurement of the current to ensure that the measurement has passed the transient period created by defects in the a-Si:H active layer, which give rise to a time-dependent capacitance.

[0068] FIG. 4 shows results of static current measurements for four cases: first when the top gate is tied to -10V , second when the top gate is grounded, third when the top gate is floating, and lastly when the top gate is shorted to the bottom gate. In FIG. 4, V_{tg} represents the bias voltage applied to the top gate of the TFT, and V_{bg} represents the voltage applied to the bottom gate of the TFT.

[0069] With a floating top gate, the characteristics are almost similar to that of a normal single gate TFT. The leakage current is relatively high particularly when the top gate is biased with a negative voltage. The lowest values of leakage current are obtained when the top gate is pegged to either 0V or to the voltage of the bottom gate. In particular, with the latter the performance of the TFT in the (forward) sub-threshold regime of operation is significantly improved. This enhancement in sub-threshold performance can be explained by the forced shift of the effective conduction path away from

the bottom interface to the bulk a-Si:H region due to the positive bias on the top gate. This in turn decreases the effect of the trap states at the bottom interface on the sub-threshold slope of the TFT.

[0070] It is noted that although the addition of another metal contact as the top gate reduces the leakage current of the TFT, it may potentially degrade pixel circuit performance by possible parasitic capacitances introduced by vertically stacking the OLED pixel. Thus the choice of top gate connection becomes important. For example, if the top gates in the pixel circuit are connected to the bottom gates of the associated TFTs, this gives rise to parasitic capacitances located between the gates and the cathode, which can lead to undesirable display operation (due to the charging up of the parasitic capacitance) when the gate driver drives the TFT switch as illustrated in FIG. 5. On the other hand, if the top gates are grounded, this results in the parasitic capacitance being grounded to yield reliable and stable circuit operation.

[0071] The OLED driver circuits considered here are the voltage-programmed 2-T driver of FIG. 6A, and the current-programmed ΔV_T -compensated 5-T version of FIG. 7A. The 5-T driver circuit is a significant variation of the previous designs, leading to reduced pixel area, reduced leakage, lower supply voltage, higher linearity ($\sim 30 \text{ dB}$), and larger dynamic range ($\sim 40 \text{ dB}$).

[0072] Before discussing the operation of the 5-T pixel driver circuit, the operation of the conventional voltage-driven 2-T pixel driver circuit will be described. FIG. 6A shows a 2-T pixel circuit including the 2-T pixel driver circuit, an OLED and a capacitor C_s . The 2-T pixel driver includes two TFTs T_1 and T_2 . FIG. 6B shows input-output timing chart of the 2-T pixel circuit of FIG. 6A. I_{OLED} represents the current passing through the OLED element and transistor T_2 .

[0073] Referring to FIGS. 6A and 6B, when the address line is activated by $V_{address}$, the voltage on the data line (V_{data}) starts charging capacitor C_s and the gate capacitance of the driver transistor T_2 . Depending on the voltage on the data line, the capacitor charges up to turn the driver transistor T_2 on, which then starts conducting to drive the OLED with the appropriate level of current. When the address line is turned off, T_1 is turned off. However, the voltage at the gate of T_2 remains since the leakage current of T_1 is trivial in comparison. Hence, the current through the OLED remains unchanged after the turn off process. The OLED current changes only the next time around when a different voltage is written into the pixel.

[0074] FIG. 7A illustrates a 5-T pixel circuit having the 5-T pixel current driver circuit for an OLED display, an OLED, and a capacitor C. The 5-T pixel current driver circuit has five TFTs T_1 - T_5 . Unlike the 2-T pixel driver circuit of FIG. 6A, the data that is written into the 5-T pixel in this case is a current (I_{data}).

[0075] FIG. 7B shows input-output timing diagrams of the 5-T pixel circuit of FIG. 7A. Referring to FIGS. 7A and 7B, the address line voltage $V_{address}$ and the data line current I_{data} are activated or deactivated simultaneously. When $V_{address}$ is activated, it forces T_1 and T_2 to turn on. T_1 immediately starts conducting but T_2 does not since T_3 and T_4 are off. Therefore, the voltages at the drain and source of T_2 become equal. The current flow through T_1 starts charging the gate capacitor of transistors T_3 and T_5 , like the 2-T driver. The current of these transistors starts increasing and consequently T_2 starts to conduct current. Therefore, T_1 's share of I_{data} reduces and T_2 's share of I_{data} increases. This process continues until the gate

capacitors of T_3 and T_5 charge (via T_1) to a voltage that forces the current of T_3 to be I_{data} . At this time, the current of T_1 is zero and the entire I_{data} goes through T_2 and T_3 . At the same time, T_5 drives a current through the OLED, which is ideally equal to $I_{data} * (W_5/W_3)$. (W_5/W_3) signifies a current gain where W_5 represents channel width of T_5 , and W_3 represents channel width of T_3 . Now if I_{data} and $V_{address}$ are deactivated, T_2 will turn off, but due to the presence of capacitances in T_3 and T_5 , the current of these two devices cannot be changed easily, since the capacitances keep the bias voltages constant. This forces T_4 to conduct the same current as that of T_3 , to enable the driver T_5 to drive the same current into the OLED even when the write period is over. Writing a new value into the pixel then changes the current driven into the OLED.

[0076] The result of transient simulation for the 5-T current driver circuit of FIG. 7A is shown in FIG. 8. As can be seen, the circuit has a write time of $<70 \mu s$, which is acceptable for most applications. The 5-T current driver circuit does not increase the required pixel size significantly (FIG. 1), since the sizes of T_2 , T_3 , and T_4 are scaled down. This also provides an internal gain ($W_5/W_3=8$), which reduces the required input current to $<2 \mu A$ for $10 \mu A$ OLED current.

[0077] The transfer characteristics for the 2-T and 5-T driver circuits of FIGS. 6A and 7A are illustrated in FIGS. 9 and 10, respectively, generated using reliable physically-based TFT models for both forward and reverse regimes. A much improved linearity (~ 30 dB) in the transfer characteristics (I_{data}/I_{OLED}) is observed for the 5-T driver circuit due to the geometrically-defined internal pixel gain as compared to similar designs. In addition, there are two components (OLED and T_5) in the high current path, which in turn decreases the required supply voltage and hence improves the dynamic range. According to FIG. 10, a good dynamic range (~ 40 dB) is observed for supply voltage of 20V and drive currents in the range $I_{OLED} \leq 10 \mu A$, which is realistic for high brightness.

[0078] FIG. 11 illustrates variation in the OLED current with the shift in threshold voltage for the 2-T and 5-T driver circuits of FIGS. 6A and 7A.

[0079] In FIG. 11, the graph having a mark “■” represents the OLED current when using the 2-T pixel driver circuit, and the graph having a mark “◆” represents the OLED current when using the 5-T pixel driver circuit.

[0080] The 5-T current driver circuit compensates for the shift in threshold voltage particularly when the shift is smaller than 10% of the supply voltage. This is because the 5-T current driver circuit is current-programmed. In contrast, the OLED current in the 2-T driver circuit changes significantly with a shift in threshold voltage. The 5-T current driver circuit described here operates at much lower supply voltages, has a much larger drive current, and occupies less area.

[0081] The pixel architectures are compatible to surface (top) emissive AMOLED displays that enable high on-pixel TFT integration density for uniformity in OLED drive current and high aperture ratio. The 5-T driver circuit of FIG. 7A provides on-pixel gain, high linearity (~ 30 dB), and high dynamic range (~ 40 dB) at low supply voltages (15-20V) compared to the similar designs (27V). The results described here illustrate the feasibility of using a-Si:H for 3-inch mobile monochrome display applications on both glass and plastic substrates. With the latter, although the mobility of the TFT is lower, the size of the drive transistor can be scaled up yet meeting the requirements on pixel area as depicted in FIG. 1.

[0082] As described above, the TFT may be, but not limited to, a polysilicon-based TFT. Polysilicon has higher electron and hole mobilities than amorphous silicon. The hole mobilities are large enough to allow the fabrication of p-channel TFTs.

[0083] The advantage of having p-channel TFTs is that bottom emissive OLEDs can be used along with a p-channel drive TFT to make a good current source. One such circuit is shown in FIG. 12. FIG. 12 illustrates a pixel circuit having a conventional 2-T polysilicon based pixel current driver circuit. The 2-T polysilicon based pixel current driver circuit has a p-channel drive TFT. In FIG. 12, T_1 and T_2 are p-channel TFTs.

[0084] In FIG. 12, the source of the p-type drive TFT is connected to V_{supply} . Therefore, V_{gs} , gate-to-source voltage, and hence the drive current of the p-type TFT is independent of OLED characteristics. In other words, the driver shown in FIG. 12 performs as a good current source. Hence, bottom emissive OLEDs are suitable for use with p-channel drive TFTs, and top emissive OLEDs are suitable for use with n-channel TFTs.

[0085] The trade-off with using polysilicon is that the process of making polysilicon TFTs requires much higher temperatures than that of amorphous silicon. This high temperature-processing requirement greatly increases the cost, and is not amenable to plastic substrates. Moreover, polysilicon technology is not as mature and widely available as amorphous silicon. In contrast, amorphous silicon is a well-established technology currently used in liquid crystal displays (LCDs). It is due to these reasons that amorphous silicon combined with top emissive OLED based circuit designs is most promising for AMOLED displays.

[0086] Compared to polysilicon TFTs, amorphous silicon TFTs are n-type and thus are more suitable for top emission circuits as shown in FIG. 2, and doesn't preclude their use in full colour bottom emission circuits either. However, amorphous silicon TFTs have inherent stability problems due to the material structure. In amorphous silicon circuit design, the biggest hurdle is the increase in threshold voltage V_{th} after prolonged gate bias. This shift is particularly evident in the drive TFT of an OLED display pixel. This drive TFT is always in the 'ON' state, in which there is a positive voltage at its gate. As a result, its V_{th} increases and the drive current decreases based on the current-voltage equation below:

$$I_{ds} = (\mu C_{ox} W/2L)(V_{gs} - V_{th})^2 \text{ (in Saturation region)}$$

where I_{ds} represents drain to source current; μ represents mobility; C_{ox} represents gate capacitance; W represents channel width; L represents channel length; V_{gs} represents gate to source voltage; and V_{th} represents threshold voltage.

[0087] In the display, this would mean that the brightness of the OLED would decrease over time, which is unacceptable. Hence, the 2-T driver circuits as described above are not practical for OLED displays, as they do not compensate for any increase in V_{th} .

[0088] By contrast, the current mirror based pixel current driver circuit illustrated in FIG. 7A automatically compensates for shifts in the V_{th} of the drive TFT in a pixel.

[0089] FIGS. 13-17 illustrate pixel circuits having pixel current driver circuits in accordance with further embodiments of the present invention. Each of the pixel circuits shown in FIGS. 13-16 includes a 4-T pixel current driver circuit, an OLED and a capacitor C_s . The pixel circuit shown in FIG. 17 includes a pixel current driver circuit, OLEDs, and

capacitors C_s . While the pixel current driver circuits of FIGS. 13-16 are presented for a monochrome OLED display, the pixel current driver circuits of FIGS. 13-16 are, however, applicable to a full color display. The pixel current driver circuit of FIG. 17 is provided for a full colour, OLED display. [0090] The pixel driver circuits of FIGS. 13-17 are current mirror based pixel driver circuits. All these circuits illustrated in FIGS. 13-17 have mechanisms that automatically compensate for the V_{th} shift of a drive TFT.

[0091] The pixel current driver circuit of FIG. 13 is a modification of the 5-T pixel driver circuit of FIG. 7A. The 4-T pixel current driver circuit of FIG. 13 has four TFTs, T_1 - T_4 . The 4-T pixel current driver circuit of FIG. 13 compensates for the shift of V_{th} of T_4 . The 4-T pixel current driver circuit of FIG. 13 occupies a smaller area than that of the 5-T pixel current driver circuit, and provides a higher dynamic range. The higher dynamic range allows for a larger signal swing at the input, which means that the OLED brightness can be adjusted over a larger range.

[0092] The 4-T pixel current driver circuit of FIG. 14 has four TFTs, T_1 - T_4 , and has a lower discharge time. The 4-T pixel current driver circuit of FIG. 14 compensates for the shift of V_{th} of T_4 . The advantage of this circuit is that the discharge time of the capacitor C_s is substantially reduced. This is because the discharge path has two TFTs (as compared to three TFTs in the circuit of FIG. 13). The charging time remains the same. The other advantage is that there is an additional gain provided by this circuit because T_3 and T_4 do not have the same source voltages. However, this gain is non-linear and may not be desirable in some cases.

[0093] The 4-T pixel current driver circuit of FIG. 15 has four TFTs, T_1 - T_4 . The 4-T pixel current driver circuit of FIG. 15 compensates for the shift of V_{th} of T_4 . This circuit does not have the non-linear gain present in the pixel driver circuit of FIG. 14, since the source terminals of T_3 and T_4 are at the same voltage. It still maintains the lower capacitance discharge time, along with the other features of the circuit of FIG. 9.

[0094] The 4-T pixel current driver circuit of FIG. 16 has four TFTs, T_1 - T_4 . The 4-T pixel current driver circuit of FIG. 16 compensates for the shift of V_{th} of T_4 . This circuit forms the building block for the 3-colour RGB circuit shown in FIG. 17. It also has a low capacitance discharge time and high dynamic range.

[0095] The full colour circuit shown in FIG. 17 minimizes the area required by an RGB pixel on a display, while maintaining the desirable features like threshold voltage shift compensation, in-pixel current gain, low capacitance discharge time, and high dynamic range. In FIG. 17, V_{blue} , V_{Green} , V_{Red} represent control signals for programming the blue, green, and red pixels, respectively. The pixel current driver circuit of FIG. 17 compensates for the shift of V_{th} of T_6 .

[0096] The circuits described above may be fabricated using normal inverted staggered TFT structures. The length and width of the thin film transistors may change depending on the maximum drive current required by the circuit and the fabrication technology used.

[0097] The pixel current driver circuits of FIGS. 7 and 13-17 use n-type amorphous silicon TFTs. With the above structure on the a-Si:H current driver according to the embodiments of the present invention, the charge induced in the top channel of the TFT is minimized, and the leakage currents in the TFT is minimized so as to enhance circuit performance.

[0098] However, polysilicon technology may be applied to the pixel current driver circuits using p-type or n-type TFTs. These circuits, when made in polysilicon, can compensate for the spatial non-uniformity of the threshold voltage. The p-type circuits are conjugates of the above-mentioned circuits and are suitable for the bottom emissive pixels.

[0099] In FIGS. 6A, 7A, and 12-17, the TFT having dual gates is shown, where the dual gate includes a top gate and a bottom gate. The top gate may be grounded (for example, in FIGS. 6A, 7A and 12-17), or electrically tied to a bottom gate (FIG. 18).

[0100] The dual-gate TFTs are used in the above-mentioned circuits to enable vertical integration of the OLED layers with minimum parasitic effects. However, the above-mentioned circuits compensate for the V_{th} shift when the circuits comprise single-gate TFTs.

[0101] FIGS. 19-24 illustrate pixel current driver circuits having single-gate TFTs. FIGS. 19-24 correspond to FIGS. 7A and 13-17, respectively.

[0102] For example, the pixel current driver circuit of FIG. 19 contains single-gate TFTs having a switch TFT T_1 , a feedback TFT T_2 , a reference TFT T_3 , a diode-use TFT T_4 , and a drive TFT T_5 . The pixel current driver circuit of FIG. 20 contains single-gate TFTs having a switch TFT T_1 , a feedback TFT T_2 , a reference TFT T_3 , and a drive TFT T_4 . The pixel current driver circuit of FIG. 22 contains single-gate TFTs having a feedback TFT T_1 , a switch TFT T_2 , a reference TFT T_3 , and a drive TFT T_4 . The pixel current driver circuit of FIG. 24 contains single-gate TFTs having switch TFTs T_1 , T_3 , T_4 , T_5 , a feedback TFT T_2 , and drive TFT T_6 , T_7 , T_8 .

[0103] The driving scheme and operation of the pixel driver circuits of FIGS. 19-24 are same as those of FIGS. 7A and 13-17. The major difference between the pixel current driver circuit having dual-gate TFTs and the pixel current driver circuit having single-gate TFTs is that the pixel current driver circuit having the dual-gate TFTs utilize a better TFT design which minimizes the leakage currents in the TFTs, thus enhancing circuit performance. However, the single-gate TFTs are the standard and preferred design in industry.

[0104] In FIGS. 19-24, n-type TFTs are shown. However, the pixel current driver circuits having single-gate TFTs may include p-type TFTs. Pixel driver circuits with p-type TFTs are shown in FIGS. 25-30, where the circuits for FIGS. 25-30 are analogous to those of FIGS. 19-24, respectively.

[0105] With regard to the current driver circuits of FIGS. 19-30 the OLEDs can be either non-inverted or inverted. The four possible cases are presented in Table 1.

TABLE 1

Possible OLED connections.		
	Bottom Emission	Top Emission
OLED connected at source of drive TFT	Reduced aperture ratio Regular OLED-transparent anode OLED current depends on OLED voltage which changes with aging-undesirable location Safeguards against small variation in drive current by source degeneration	Large aperture ratio Regular OLED-transparent cathode. OLED current depends on OLED voltage which changes with aging-undesirable location Safeguards against small variation in drive current by source degeneration

TABLE 1-continued

Possible OLED connections.		
	Bottom Emission	Top Emission
OLED connected at drain of drive TFT	Reduced aperture ratio Inverted OLED-transparent cathode OLED current independent of OLED voltage	Large aperture ratio inverted OLED-transparent anode OLED current Independent of OLED voltage

[0106] The present invention has been described with regard to one or more embodiments. However, it will be apparent to persons skilled in the art that a number of variations and modifications can be made without departing from the scope of the invention as defined in the claims.

- 1-35. (canceled)
36. A control circuit coupled to supply voltage, comprising:
- a first transistor, a second transistor, and a third transistor, said first transistor controlling a current and having a first terminal connected to the second transistor acting as a switch, said first transistor having a second terminal connected to said third transistor acting as a switch connected to a potential, and
- said first transistor having a third terminal that controls an amount of current passing through said first terminal.
37. The control circuit of claim 38 which includes a load and a fourth transistor coupled in series to a supply voltage, said fourth transistor having a gate coupled to said second transistor.

* * * * *

专利名称(译)	像素驱动电路和像素电路具有耦合到电源电压的控制电路		
公开(公告)号	US20150154907A1	公开(公告)日	2015-06-04
申请号	US14/516076	申请日	2014-10-16
[标]申请(专利权)人(译)	伊格尼斯创新公司		
申请(专利权)人(译)	IGNIS创新INC.		
当前申请(专利权)人(译)	IGNIS创新INC.		
[标]发明人	NATHAN AROKIA SERVATI PEYMAN SAKARIYA KAPIL KUMAR ANIL		
发明人	NATHAN, AROKIA SERVATI, PEYMAN SAKARIYA, KAPIL KUMAR, ANIL		
IPC分类号	G09G3/32 H03K17/16 H03K17/687		
CPC分类号	G09G3/3233 H03K17/6871 G09G2320/045 G09G2300/0819 G09G2320/0204 H03K17/162 G09G3/3241 G09G2300/0804 G09G2300/0842 G09G2320/0223 H01L27/12 H01L27/283 H01L27/3244 H01L27/3276 H01L29/78648 G09G3/00 H05B45/60		
优先权	10/468319 2004-01-23 US PCT/CA2002/000173 2002-02-18 WO 60/268900 2001-02-16 US		
外部链接	Espacenet USPTO		

摘要(译)

提供了一种用于驱动发光元件的像素驱动电路和一种具有该像素驱动电路的像素电路。像素驱动电路包括数据线，地址线，开关薄膜晶体管，反馈薄膜晶体管和驱动薄膜晶体管。像素电路可以包括有机发光二极管，其由像素驱动电路驱动。

